

# PLEX

HOT WATER EXCHANGER



## Design

PLEX is a plate heat exchanger equipped with plates manufactured of acidproof steel (SS 23 43).

Insulation made up of two 30 mm thick, moulded halves of polyurethane foam, which is equivalent to approximately 70 mm of mineral wool, is included.

The surface is covered in ABS-plastic.

## Technical data

Max operating pressure 3.0 MPa

Max operating temperature 185 °C

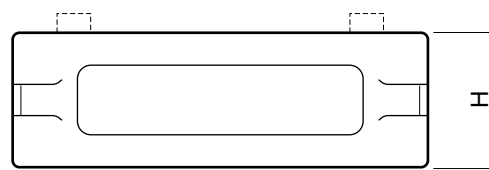
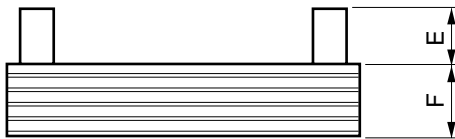
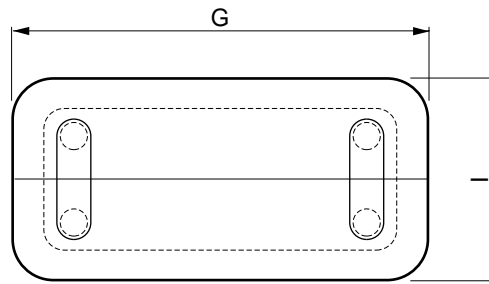
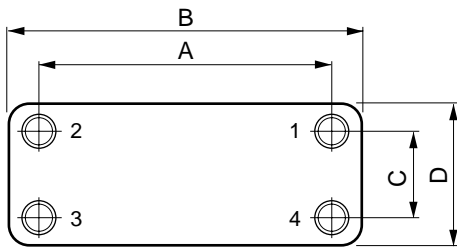
Min operating temperature -195 °C

## Tap water heat exchanger

*Comfort  
from Sweden*

A stylized logo of the Swedish flag, featuring a yellow cross on a blue background.

## Dimensions - Exchanger



- 1 Flow a, out  
2 Flow a, out

- 3 Flow b, in  
4 Flow b, out

## Dimensions

Type	Con. male g	Weight kg	A mm	B mm	C mm	D mm	E mm	F mm	G mm	H mm	I mm
PLEX 310 - 20	R 1"	3,8	250	311	50	112	45	58	360	112	182
PLEX 310 - 40	R 1"	6,4	250	311	50	112	45	106	360	160	182
PLEX 310 - 60	R 1"	9,0	250	311	50	112	45	154	360	209	182
PLEX 310 - 80	R 1"	11,6	250	311	50	112	45	202	360	257	182
PLEX 322 - 30	R 2"	13,0	520	605	92	177	55	87	670	160	244
PLEX 322 - 40	R 2"	16,5	520	605	92	177	55	116	670	247	244
PLEX 322 - 60	R 2"	23,5	520	605	92	177	55	174	670	247	244

## Exchanger data

Temperature range °C	55/45 – 5/52						
Type	310 - 20	310 - 40	310 - 60	310 - 80	322 - 30	322 - 40	322 - 60
Output (kW)	11,5	27,0	43,0	60,0	81,0	110,0	175,0
Pressure drop, primary (kPa)	6	8	11	16	23	23	26
Pressure drop, secondary (kPa)	1	1	1	1	1	1	1

Temperature range °C	80/60 – 5/70				80/50 – 5/70		
Type	310 - 20	310 - 40	310 - 60	310 - 80	322 - 30	322 - 40	322 - 60
Output (kW)	40,0	90,0	130,0	155,0	255,0	300,0	450,0
Pressure drop, primary (kPa)	18	23	21	22	19	19	19
Pressure drop, secondary (kPa)	1	2	2	2	4	4	4

We reserve the right to make changes in design and dimensions without prior notice.

**NIBE AB**  
Sweden

Box 14  
Järnvägsgatan 40  
SE-285 21 MARKARYD

Tel: +46 - (0)433-73 000  
Fax: +46 - (0)433-73 190

[www.nibe.com](http://www.nibe.com)

